

MACTEXTURE TROWEL-ON FINISHES

Acrylic-based textured finishes formulated for trowel application.

DESCRIPTION

The MAC range of premium quality interior/exterior acrylic textured finishes are formulated specifically for trowel application. Available in a range of textured effects, MAC trowel applied coatings can be tinted to an almost infinite range of fashionable colours.

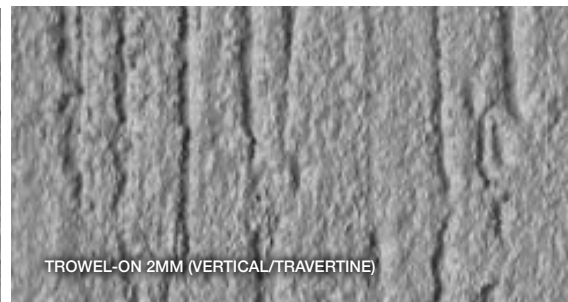
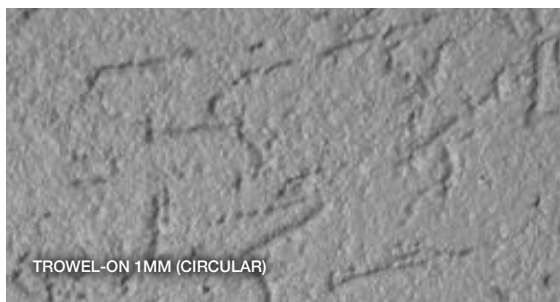
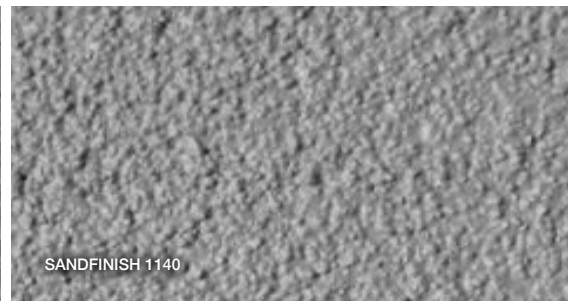
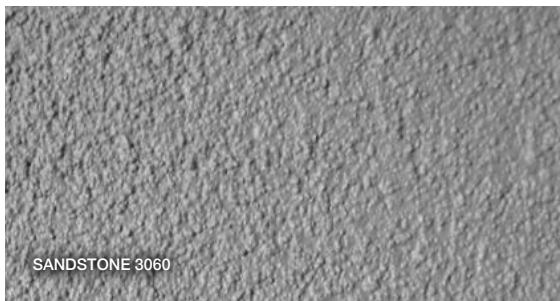
COMPOSITION

Mactexture is manufactured using only the highest quality raw materials available. These include non-rusting marble aggregates, selected fillers, mould growth inhibitors and premium grade acrylic polymer emulsions.

PRODUCT RANGE

Mactexture is available in four different grades for trowel application.

- > 3060 Sandstone (fine sandfinish)
- > 1140 Sandfinish (medium sandfinish)
- > 1 MM Trowel (medium scratch)
- > 2 MM Trowel (Coarse scratch)



COLOUR RANGE

Mactexture is supplied in its natural form as an off-white paste but can be tinted to almost any colour from all popular ranges, from deep tones to pastels.

APPLICATION & FINISHING

Prior to commencement of work, ensure a test panel has been completed and approved for both colour, texture, and surface finish. Ensure that the substrate is clean and free of any impurities that may compromise adhesion. Loose and flakey material must first be removed with a pressure cleaner. When applying over cement based materials, prime with Macprime in selected colour and allow to dry prior to

application of the textured finish. Priming will provide a uniform base for the textured finish whilst helping to eliminate discolouration issues associated with alkalinity, efflorescence and free lime bloom.

Mactexture is applied to the wall with a steel trowel at a thickness determined by the coarsest aggregates. Whilst continuing to spread the fresh material, simultaneous finishing should be carried out by a separate person/persons as close as possible to the new work in order to help maintain a 'wet-edge'. Freshly applied material should not be allowed to skin on the surface prior to finishing as this will cause visible blemishes on the finished wall. Whilst smaller jobs can be easily completed by a single applicator, large walls will require multiple applicator to achieve a seamless textured finish. To help with work-flow on larger walls, ensure scaffold is erected and loaded with sufficient product. This will eliminate any stop/start activity which may result in unsatisfactory results.



TIPS ON APPLICATION

It is imperative to maintain a 'wet-edge' during application of Mactexture coatings. All faces should be completed in a single session avoiding dry-joints at all costs. Where possible, avoid working in direct sunlight and excessively hot or windy conditions. Mactexture should only be applied in temperatures ranging between 10 and 26 C. Application in hot or windy conditions will accelerate drying, making finishing difficult. Do not apply material if temperature is to fall below 10 C during the drying process. This may result in inadequate film formation in the finished coating.

Newly coated areas should be protected from moisture for a period of 24 hours minimum from the time of application. To ensure colour uniformity across the entire project, always order sufficient material to coat the job in one batch. It is also advisable to cross-mix drums during the application process.

COVERAGE

Mactexture will cover between 9 - 14 square metres per 15 litre pail depending on grade. Refer to table for details.

TABLE 1. COATING DETAILS

| PRODUCT NAME | COATING THICKNESS | APPEARANCE | APPROX. COVERAGE |
|------------------------|-------------------|------------------------------|------------------|
| <i>Sandstone 3060</i> | <i>0.6 mm</i> | <i>Fine sand finish</i> | <i>14 m2</i> |
| <i>Sandfinish 1140</i> | <i>1.2 mm</i> | <i>Medium sand finish</i> | <i>10 m2</i> |
| <i>Trowel-on 1 mm</i> | <i>1.2 mm</i> | <i>Medium scratch finish</i> | <i>10 m2</i> |
| <i>Trowel-on 2 mm</i> | <i>2.0 mm</i> | <i>Coarse scratch finish</i> | <i>9 m2</i> |

SUPPLY & PACKAGING

Mactexture is supplied pre-tinted to the selected colour in 15 litre plastic pails. Mactexture can also be supplied in pallet lots, tinted or natural containing 48 x 15 litre pails.

CLEAN UP

Mactexture is an acrylic based product. All tools and equipment should be washed in clean water immediately following use.

SAFETY

Mactexture is non-toxic prolonged exposure may cause skin irritation. MAC strongly recommend the use of skin and eye protection during application. Refer to MSDS for details. Always ensure scaffolding used during application conforms to local government requirements.

VOC DATA

All products in the Mactexture Trowel-on range contain a calculated VOC level of <15 grams/litre un-tinted.

IMPORTANT NOTE:

Melbourne Acrylic Coatings Victoria Pty Ltd, its staff and distributors will not accept responsibility for any failure caused as a result of factors beyond our control including but not limited to onsite handling, preparation or application of this product. Application of this product should only be performed by qualified trades people trained in the use of this type of product. Information supplied in this publication is based on our testing and experience and is given in good faith. Suitability of this product should be independently determined prior to use. Warranty is limited to the replacement of any materials proven to be faulty. MAC will not warrant job defects caused as a result of but not limited to, structural movement or entrapped moisture.

WWW.MELBACRYLIC.COM.AU

